



Locked away & left behind:



**Building an inclusive
society through
enhancing lives
behind bars**



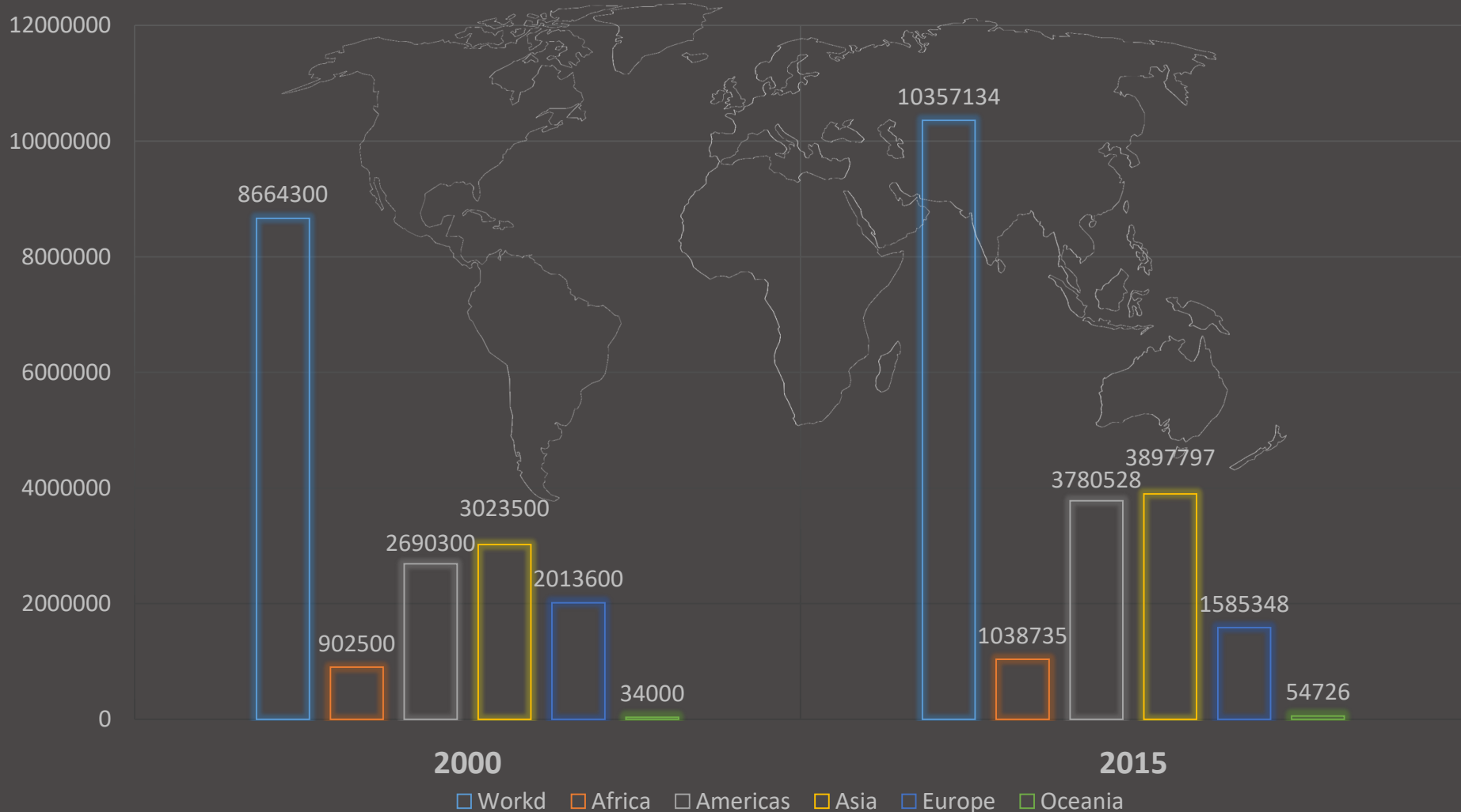
Chontit Chuenurah

**Chief of Programme – Implementation of the Bangkok Rules
and Treatment of Offenders**

Thailand Institute of Justice

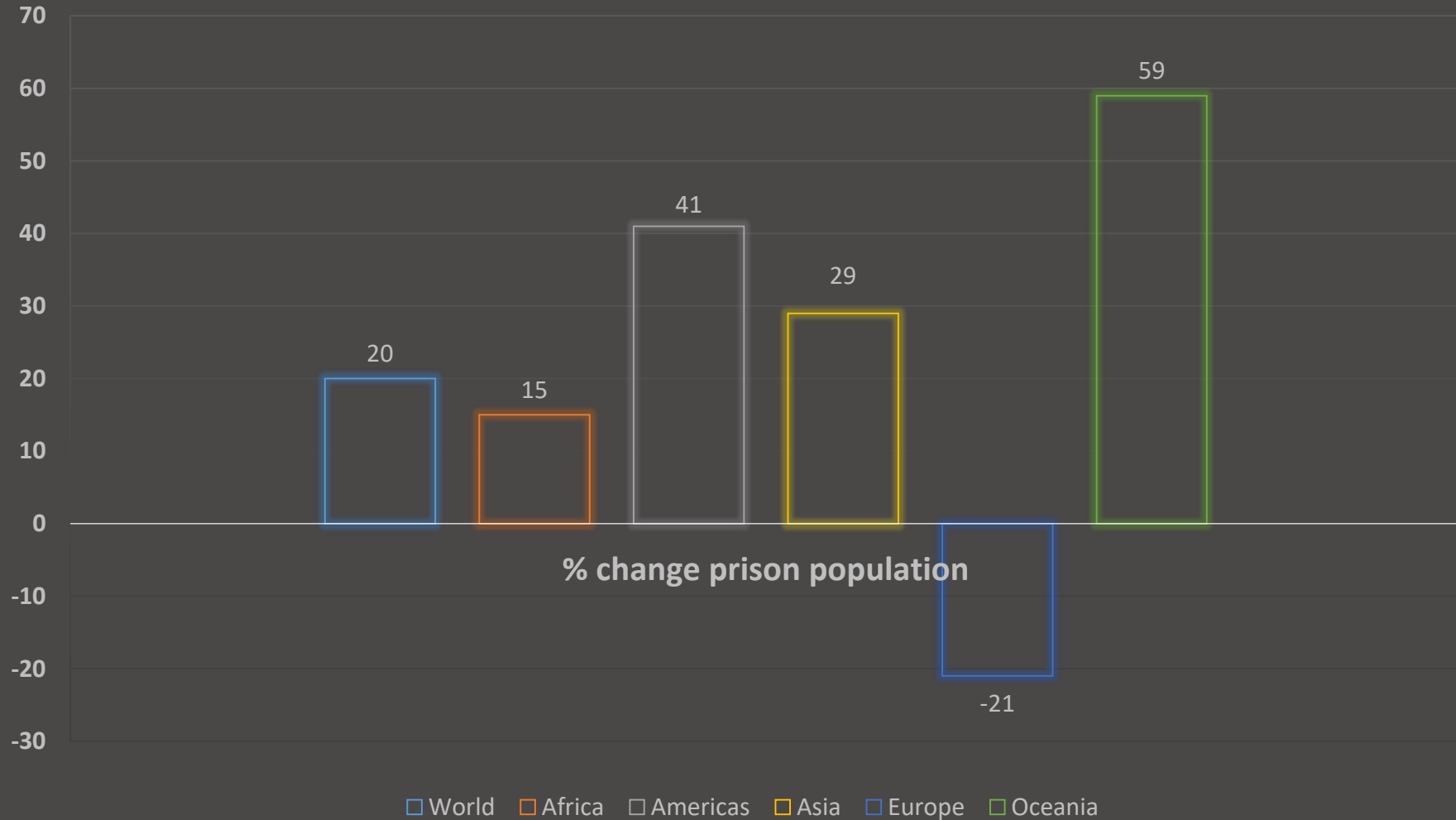
Imprisonment on the global context

Prison population totals, 2000 and 2015: entire world and continents



Imprisonment on the global context

Percentage change in prison population totals, 2000 to 2015
: entire world and continents



Pathways to Prison

Peer
Abandonment **Poverty**
Street life
Economic disadvantages
Dysfunctional family **Naivety**
Adverse childhood experience
Abuse **Domestic Violence** **Bad luck**
Social exclusion **Material needs**
Mental illness
neglect **Deception**

Behind the Prison Walls



40% of women suffer from a mental health problem

1/3 of young women suffer from major depression



TUBERCULOSIS RATE

84 times higher than in general population



7 times more likely to commit suicide

Young person in prisons **18** times more likely to commit suicide



69–90% of prisoners smoke

Average smoking rate of general population in EU is **28%**



Physical abuse

Incarcerated women are far more likely to have had traumatic experience in childhood (sexual, physical and mental abuse) than men



Domestic Violence

50% of incarcerated women experienced domestic violence

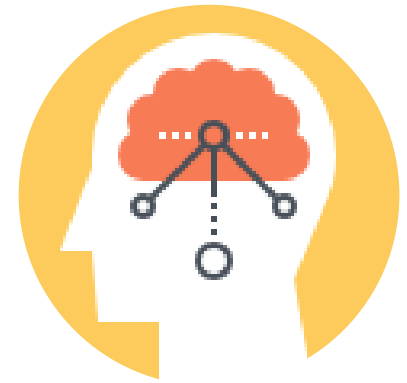
Moving Beyond Criminal Justice System



**Justice
reinvestment**



**Social
partnership**



**Human
development**

16 PEACE AND JUSTICE STRONG INSTITUTIONS



Thank you

Disclaimer

The views expressed in this presentation are those of the presenters, and do not necessarily reflect the views of the Thai Government or the organization to which the presenters belong.

